



# ORCHID SOUTH PARK

# Location Map



## TECH PARKS

- Tata Consultancy Services - 07 Mins.
- Salarpuria Sattva South Tech Park - 03 Mins.
- Sattva South Avenue - 03 Mins.
- Gold Hill Supreme (GHS) - 06 Mins.
- Global Tech Park - 08 Mins.
- Tech Mahindra Limited - 08 Mins.
- Continental Automotive Components India Pvt. Ltd. - 06 Mins.
- Carl Zeiss India Bangalore Pvt. Ltd. - 07 Mins.
- Delta Electronics India Pvt. Ltd. - 07 Mins.
- Titan Company Limited - 10 Mins.
- JP Software Park - 10 Mins.
- Velankani Tech Park - 12 Mins.
- Hewlett Packard Enterprise (HP) - 12 Mins.
- Bosch Global Software Technologies - 14 Mins.
- Infosys - 14 Mins.
- Wipro Campus (Electronic City) - 14 Mins.
- Software Technology Parks of India - 16 Mins.
- Cyber Park - 18 Mins.
- Biocon Research Limited - 17 Mins.
- Schneider Electric India Pvt. Ltd. - 16 Mins.



## EDUCATIONAL INSTITUTIONS

- St. Francis High School - 02 Mins.
- National Public School - 03 Mins.
- Brookfield High School - 07 Mins.
- EISB - Ebenezer International School - 11 Mins.
- Kidzee Play School - 19 Mins.
- Euro School Electronic City - 16 Mins.
- St. Xavier's School - 21 Mins.
- Treamis Schools - 18 Mins.
- Delhi Public School Electronic City - 20 Mins.
- VIBGYOR High School - 21 Mins.



## CONNECTIVITY

- Hosur Road - 02 Mins.
- Huskur Metro Station - 02 Mins.
- Biocon Hebbagodi (Metro)- 03 Mins.
- NHAI ETW Toll Gate, Electronic City - 07 Mins.
- Infosys Foundation Konappana Agrahara (Metro) - 08 Mins.
- Nice Ring Road Toll Plaza - 13 Mins.
- Silk Board Junction - 20 Mins.



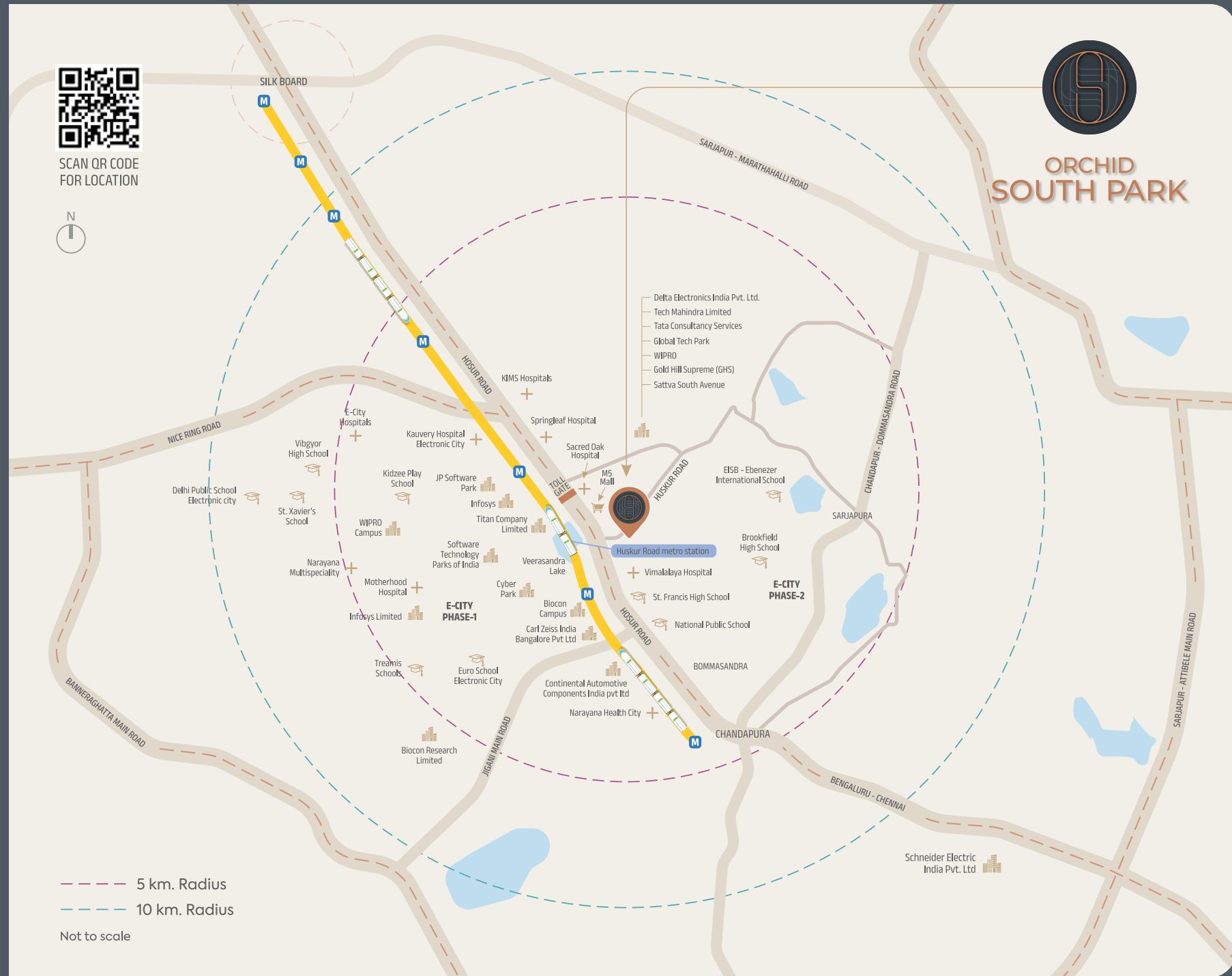
## HOSPITALS

- Vimalalaya Hospital - 07 Mins.
- Sacred Oak Hospital - 04 Mins.
- Springleaf Hospital - 07 Mins.
- KIMS Hospitals - 11 Mins.
- Kauvery Hospital Electronic City - 11 Mins.
- E-City Hospitals - 15 Mins.
- Motherhood Hospital - 14 Mins.
- Narayana Multispeciality - 15 Mins.



## LEISURE DESTINATIONS

- SBR Lucky Mall - 01 Mins.
- M5 Ecity Mall - 03 Mins.
- Vishal Mega Mart - 05 Mins.
- Metro Cash & Carry - 15 Mins.
- 46 Ounces Brewgarden - 12 Mins.
- Red Riders Gokarting - 19 Mins.
- Macaw By Stories - 21 Mins.





# ORCHID SOUTH PARK

## SITE LAYOUT



### LANDSCAPE AMENITIES



DROP OFF ZONE



JUNIOR'S RETREAT



SWING COURT



SOCIAL COURT



HOBBY HUB



ORGANIC FARM



AROMA GARDEN



AMPHITHEATER



FUTSAL COURT



BOX CRICKET



CELEBRATION LAWN



PICKLEBALL COURT



DRIBBLE ZONE



PET GROOVE

### CLUB AMENITIES



SWIMMING POOL



STEAM & MASSAGE



GYMNASIUM



LOUNGE / LIBRARY



INDOOR GAMES



MINITHEATER



ACTIVITY ROOM



BANQUET HALL



# 2 BHK

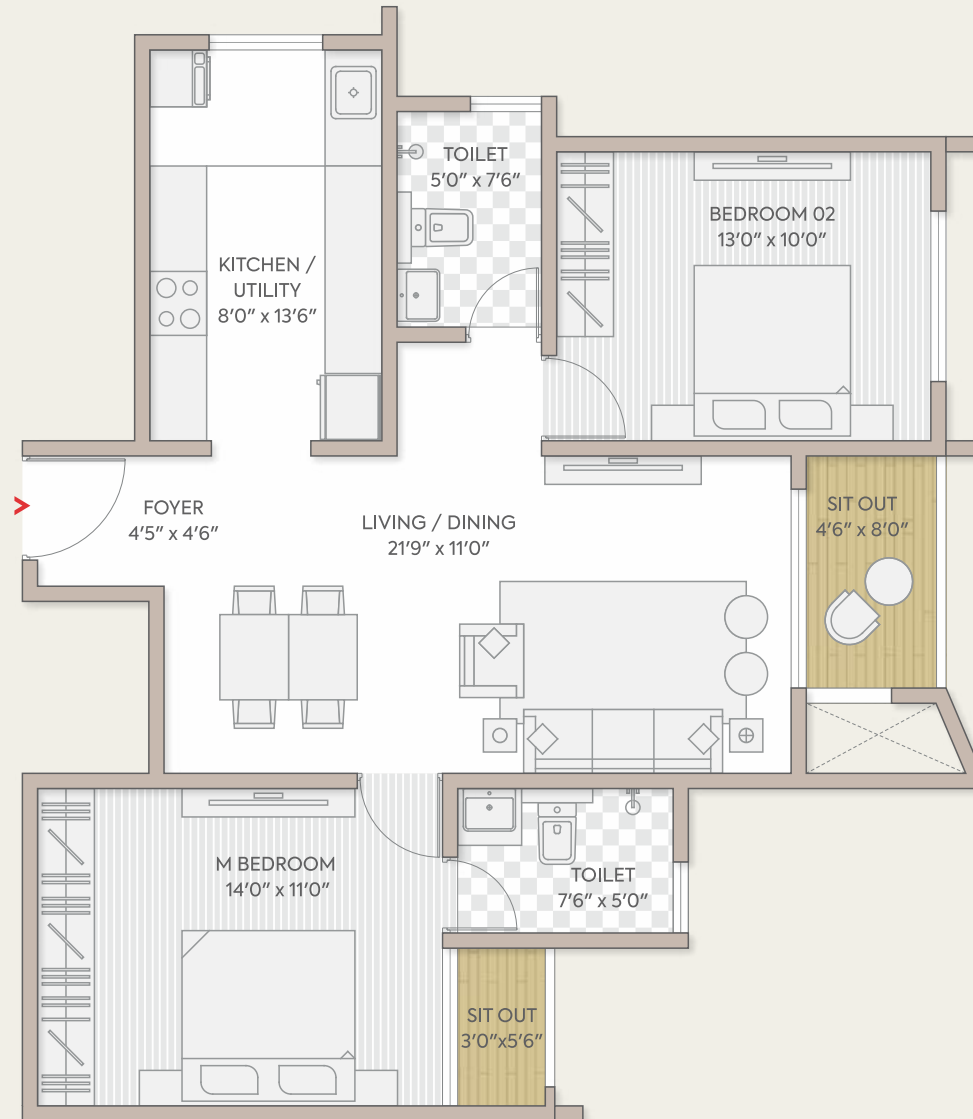
## TYPICAL UNIT

TOTAL AREA : 1266 SQ.FT. (S.B. UP)

TOWER: A

A : 103 - 3003

AREA AS PER RERA	SQ. MTR.	SQ.FT.
CARPET AREA	73.91	795.56
BALCONY AREA	4.90	52.74



# 2 BHK

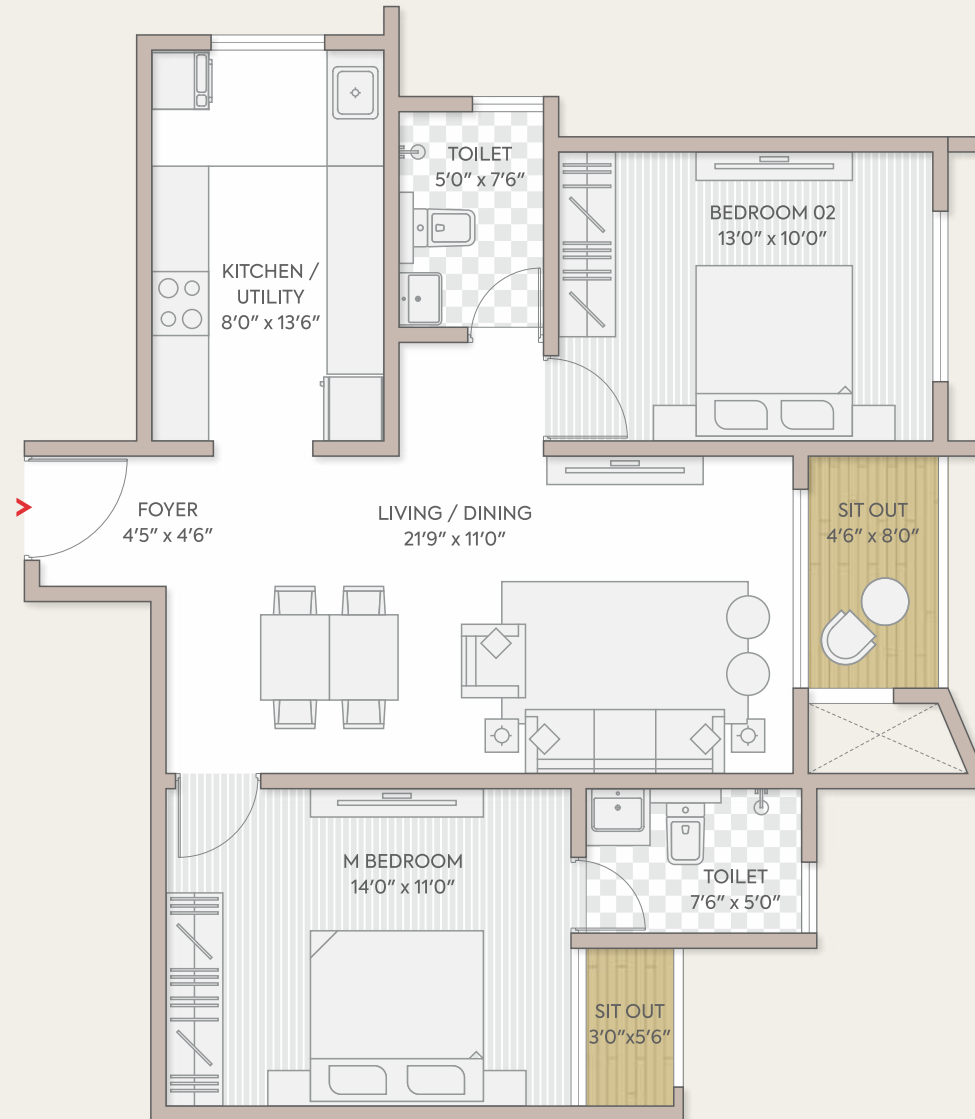
## TYPICAL UNIT

TOTAL AREA : 1270 SQ.FT. (S.B. UP)

TOWER: B

B : 103 - 3003

AREA AS PER RERA	SQ. MTR.	SQ.FT.
CARPET AREA	74.13	797.93
BALCONY AREA	4.90	52.74



# 2 BHK

## TYPICAL UNIT

TOTAL AREA : 1281 SQ.FT. (S.B. UP)

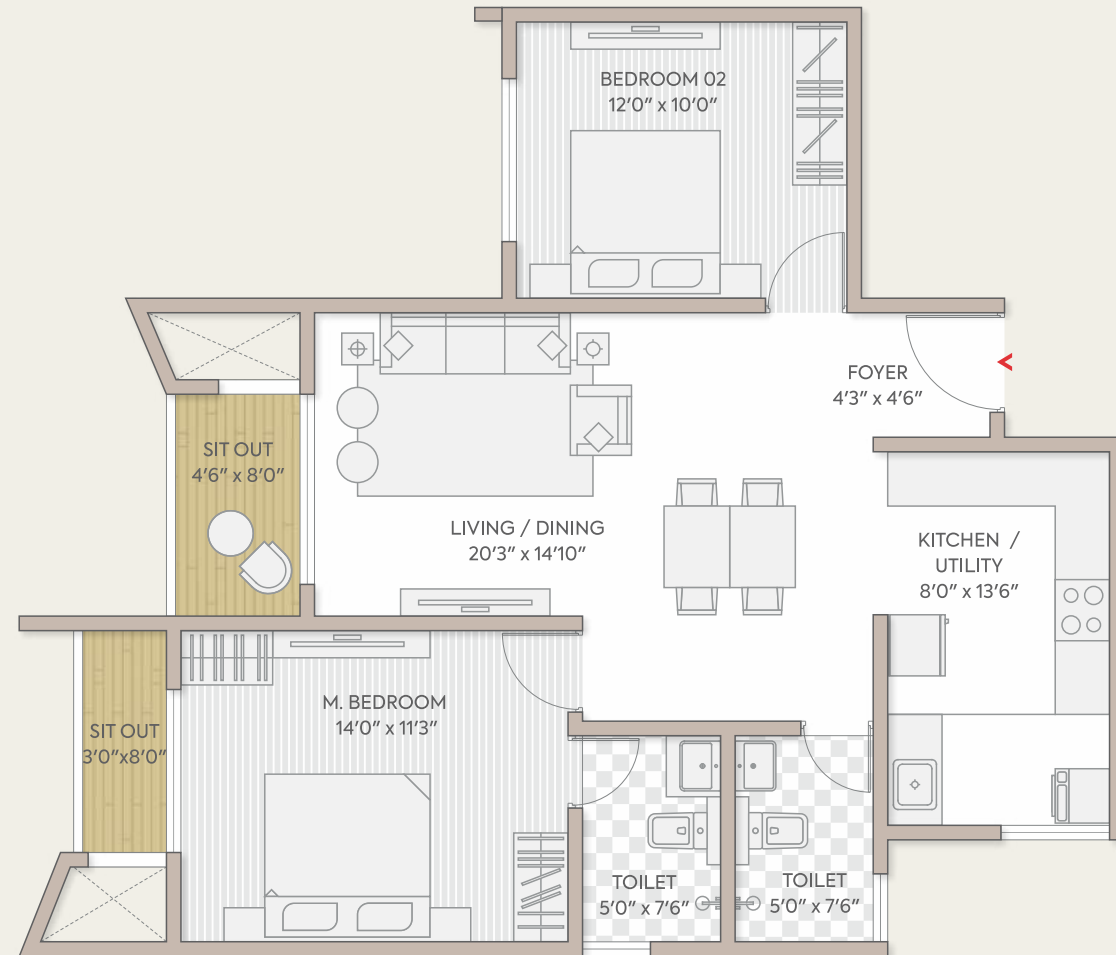
### TOWER: A & B

A & B : 106 - 1706

A & B : 1906 - 2706

A & B : 2906 - 3006

AREA AS PER RERA	SQ. MTR.	SQ.FT.
CARPET AREA	74.07	797.28
BALCONY AREA	5.63	60.60



# 3 BHK + 2 T

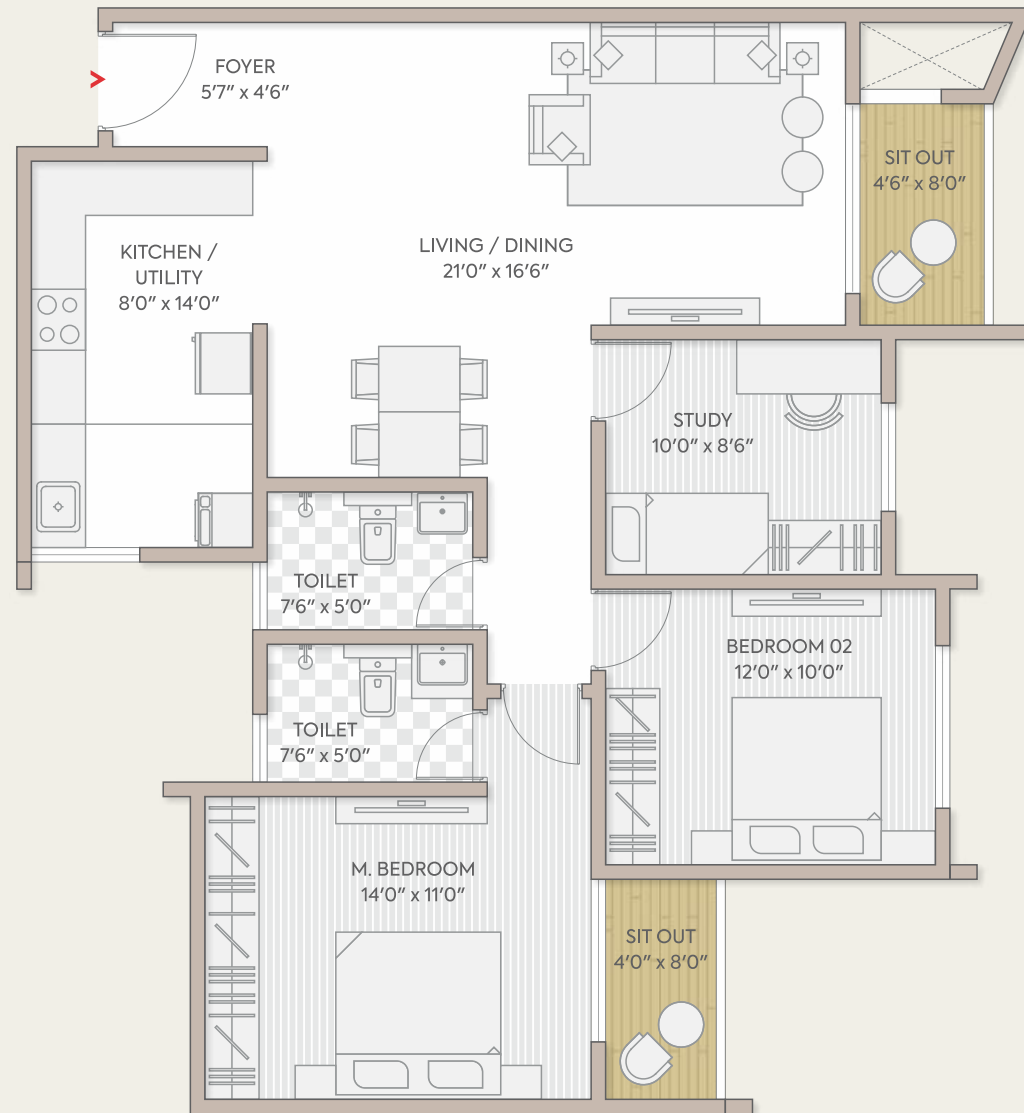
## TYPICAL UNIT

TOTAL AREA : 1558 SQ.FT. (S.B. UP)

TOWER: B

B : 104 - 3004

AREA AS PER RERA	SQ. MTR.	SQ.FT.
CARPET AREA	90.59	975.11
BALCONY AREA	6.35	68.35



# 3 BHK + 2 T

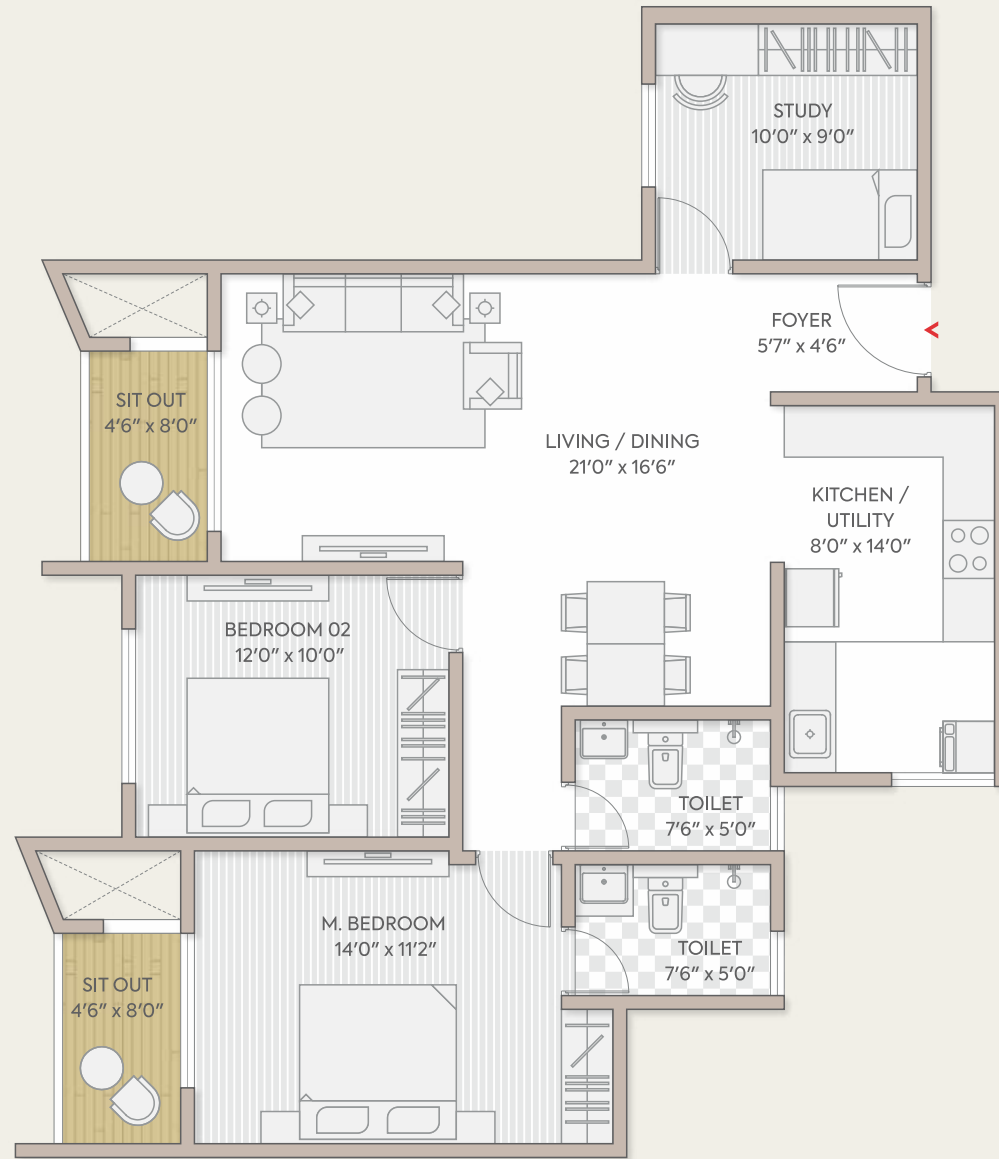
## TYPICAL UNIT

TOTAL AREA : 1558 SQ.FT. (S.B. UP)

TOWER: A

A : 105 - 3005

AREA AS PER RERA	SQ. MTR.	SQ.FT.
CARPET AREA	90.25	971.45
BALCONY AREA	6.73	72.44



# 3 BHK + 2 T

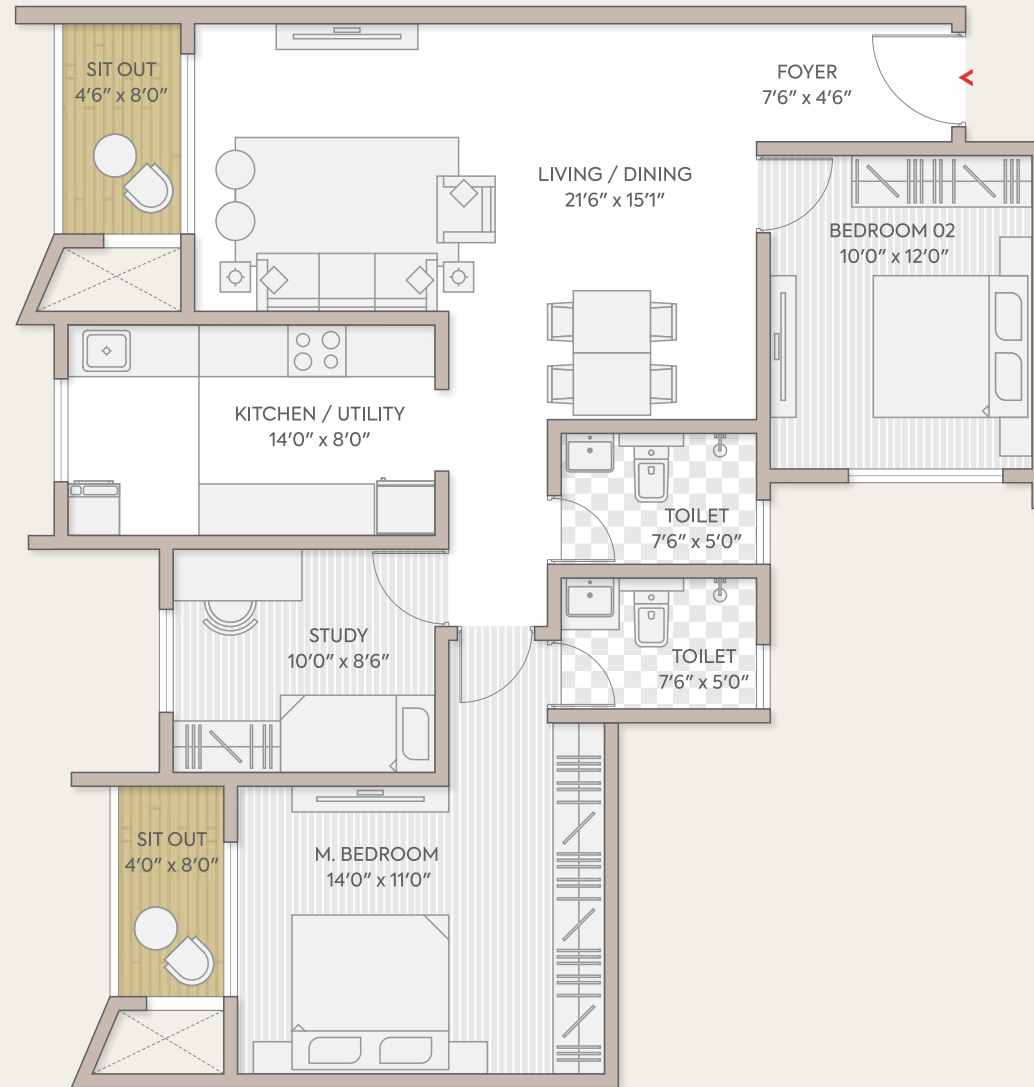
## TYPICAL UNIT

TOTAL AREA : 1582 SQ.FT. (S.B. UP)

TOWER: B

B : 105 - 3005

AREA AS PER RERA	SQ. MTR.	SQ.FT.
CARPET AREA	92.12	991.57
BALCONY AREA	6.37	68.57



# 3 BHK

## TYPICAL UNIT

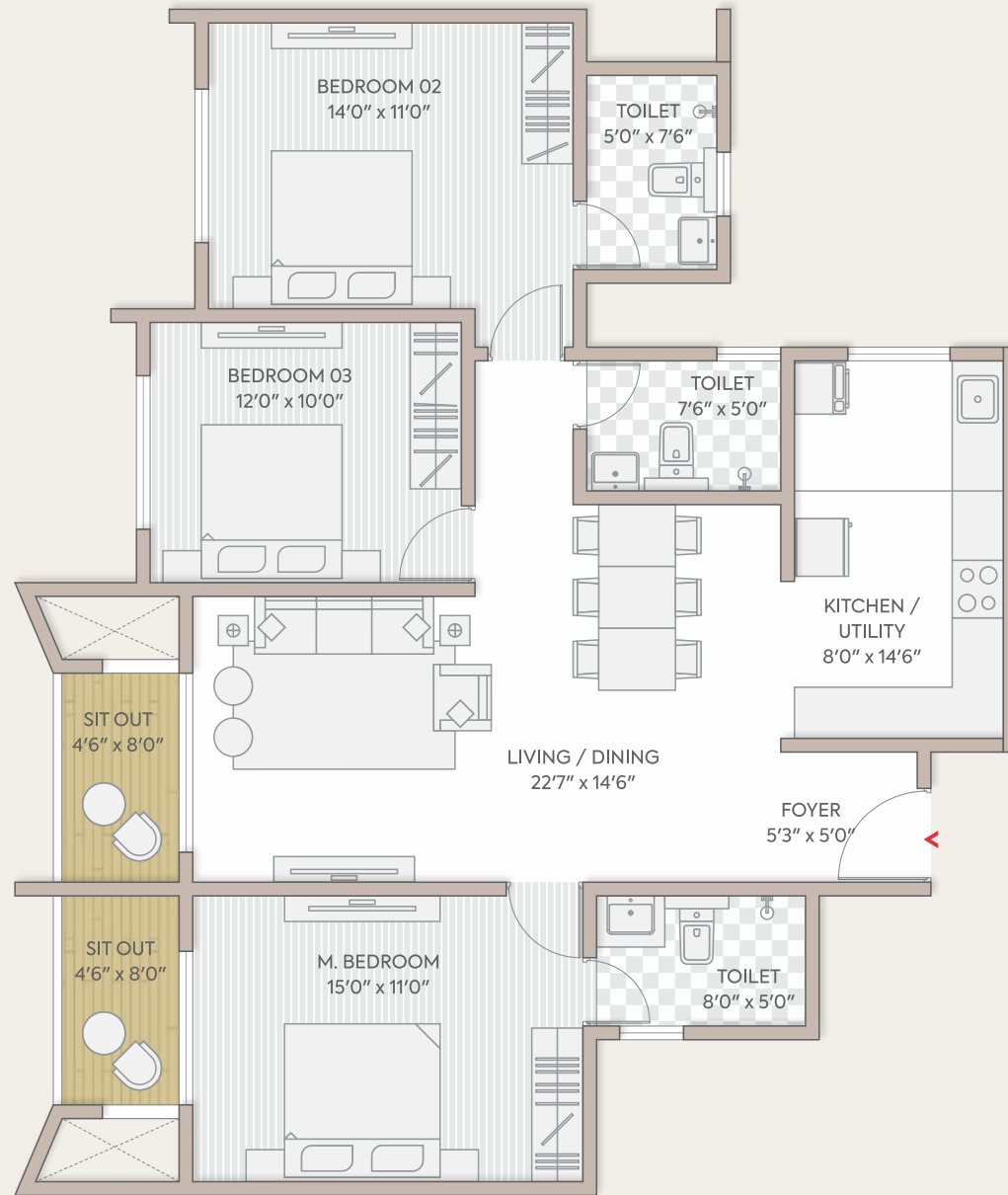
TOTAL AREA : 1731 SQ.FT. (S.B. UP)

TOWER: A & B

A : 101 - 3001

B : 101 - 3001

AREA AS PER RERA	SQ. MTR.	SQ.FT.
CARPET AREA	101.03	1087.48
BALCONY AREA	6.73	72.44



# 3 BHK

## TYPICAL UNIT

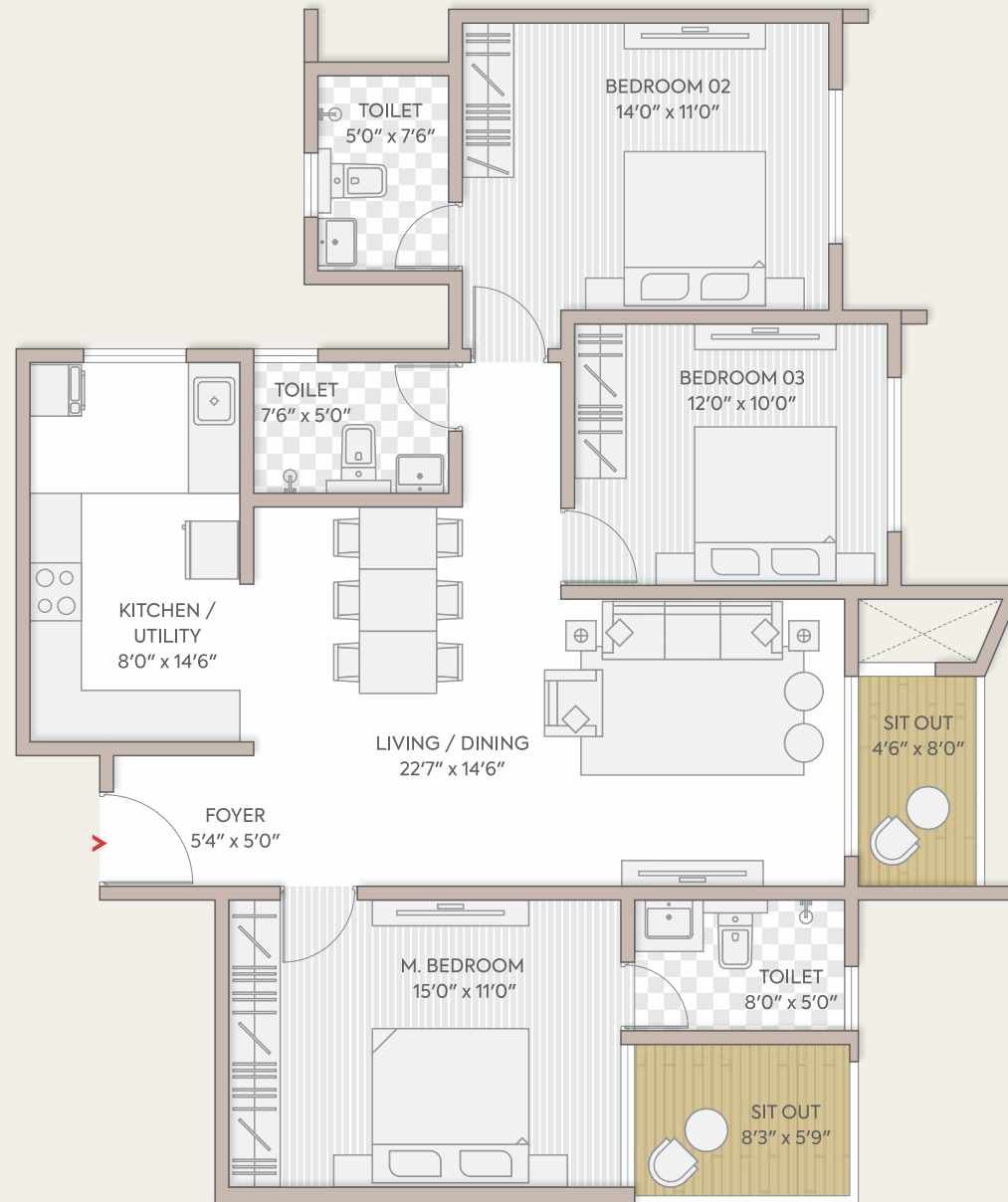
TOTAL AREA : 1744 SQ.FT. (S.B. UP)

TOWER: A & B

A : 102 - 3002

B : 102 - 3002

AREA AS PER RERA	SQ. MTR.	SQ.FT.
CARPET AREA	100.77	1084.68
BALCONY AREA	7.79	83.85



# 3 BHK

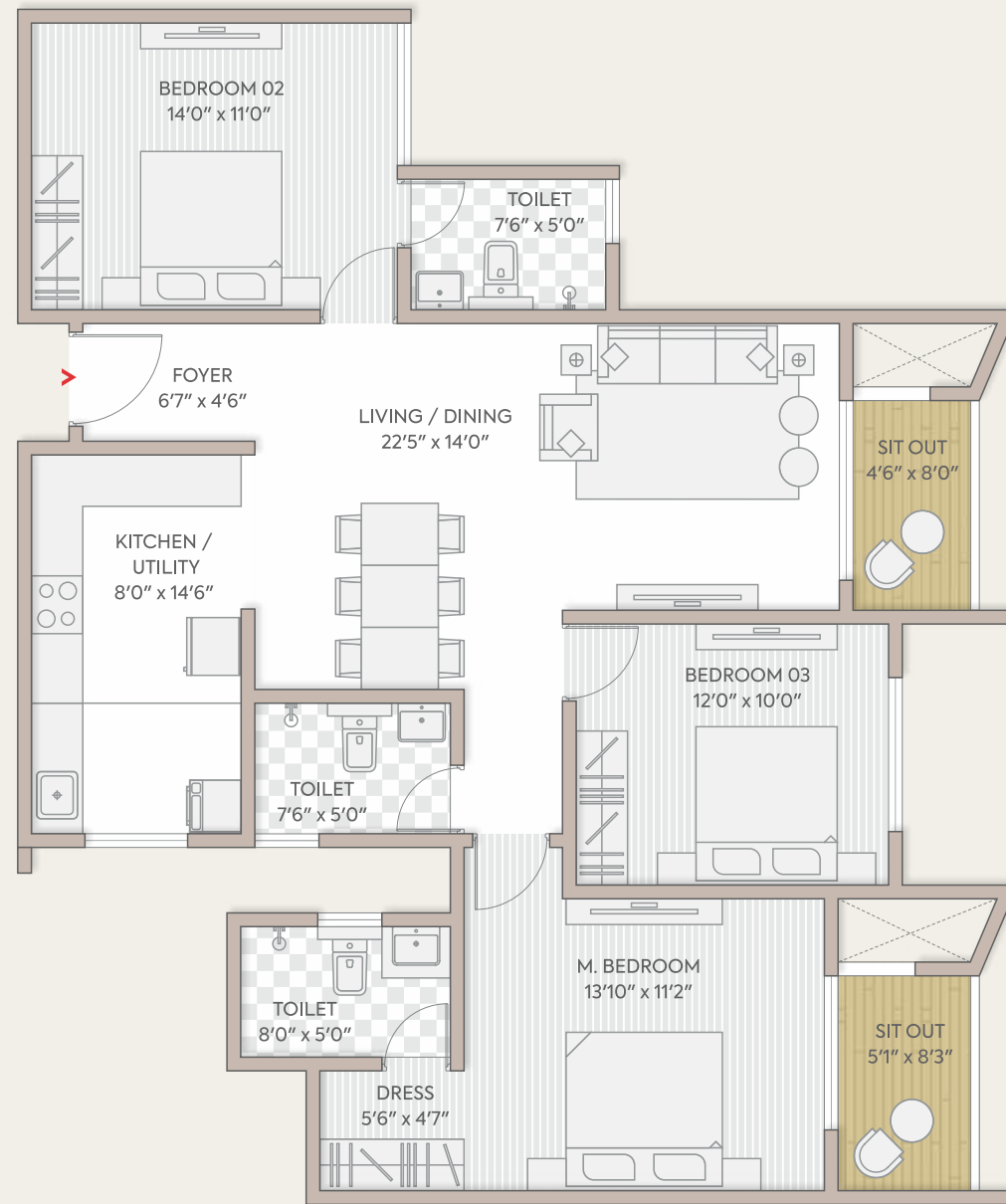
## TYPICAL UNIT

TOTAL AREA : 1758 SQ.FT. (S.B. UP)

TOWER: A

A : 104 - 3004

AREA AS PER RERA	SQ. MTR.	SQ.FT.
CARPET AREA	102.13	1099.32
BALCONY AREA	7.26	78.14



# Specifications

WALL FINISHING	<ul style="list-style-type: none"><li>• Internal walls &amp; ceiling finished with Tractor Emulsion</li><li>• External walls finished with weather coat / weather shield paint</li></ul>
FLOORING	<ul style="list-style-type: none"><li>• Vitrified tiles for living, dining, kitchen, bedrooms &amp; utility area</li><li>• Ceramic / vitrified tiles for all balconies</li><li>• Rustic / vitrified tiles for lobbies</li></ul>
DOORS	<ul style="list-style-type: none"><li>• 8 ft. Main door with wood finish frame and wood finish flush door</li><li>• Internal doors with wood finish frames and wood finish flush doors</li></ul>
WINDOWS	<ul style="list-style-type: none"><li>• 8 ft. UPVC / frames with sliding shutters for all doors &amp; windows</li><li>• Mosquito mesh provision</li></ul>
KITCHEN / UTILITY	<ul style="list-style-type: none"><li>• Counter provision for modular kitchen ( No granite countertop provided )</li><li>• Washing machine point - provision in utility area.</li></ul>
TOILETS	<ul style="list-style-type: none"><li>• Ceramic / vitrified tiles for flooring and dado up to false ceiling</li><li>• Granite countertop wash basin in master toilet &amp; wall mounted wash basin in other toilets</li><li>• EWC's and chrome plated fittings with shower mixer for all toilets</li><li>• Grid false ceiling</li><li>• Provision for exhaust fan and geyser</li></ul>


ELECTRICAL	<ul style="list-style-type: none"><li>• 2 &amp; 3BHK+2T : 4 KW BESCOM single phase power supply &amp; 0.75 KW DG backup</li><li>• 3 BHK: 5 KW BESCOM single phase power supply &amp; 1 KW DG backup</li><li>• 100% DG backup for pumps, lifts &amp; common areas</li><li>• Video door phone provision</li></ul>
WATER SUPPLY	<ul style="list-style-type: none"><li>• CPVC pipes for water supply</li><li>• UPVC/PVC pipes for soil, drainage &amp; external lines</li><li>• Sewage treatment plant</li><li>• Rainwater harvesting system</li></ul>
LIFTS	<ul style="list-style-type: none"><li>• 3 nos. of 15P capacity in each tower</li></ul>
SECURITY SYSTEM	<ul style="list-style-type: none"><li>• CCTV coverage for peripheral areas</li><li>• Security cabin at entry &amp; exit</li></ul>




ORCHID  
SOUTH PARK



creating landmarks since 1971

 **Office Address:** Unit 203, 2nd Floor, Barton Center,  
84, Mg Road, Bengaluru - 560001

 **Site Address:** Huskur Rd, Ananth Nagar,  
Phase 1, Kammasandra, Electronic City,  
Bengaluru, Karnataka 560100

 +91 80888 66000 / +91 80888 33000

 [www.goyalco.com](http://www.goyalco.com)

 [info.bng@goyalco.com](mailto:info.bng@goyalco.com)

Registration No.: PRM/KA/RERA/1251/308/PR/060526/008625  
[www.rera.karnataka.gov.in](http://www.rera.karnataka.gov.in)